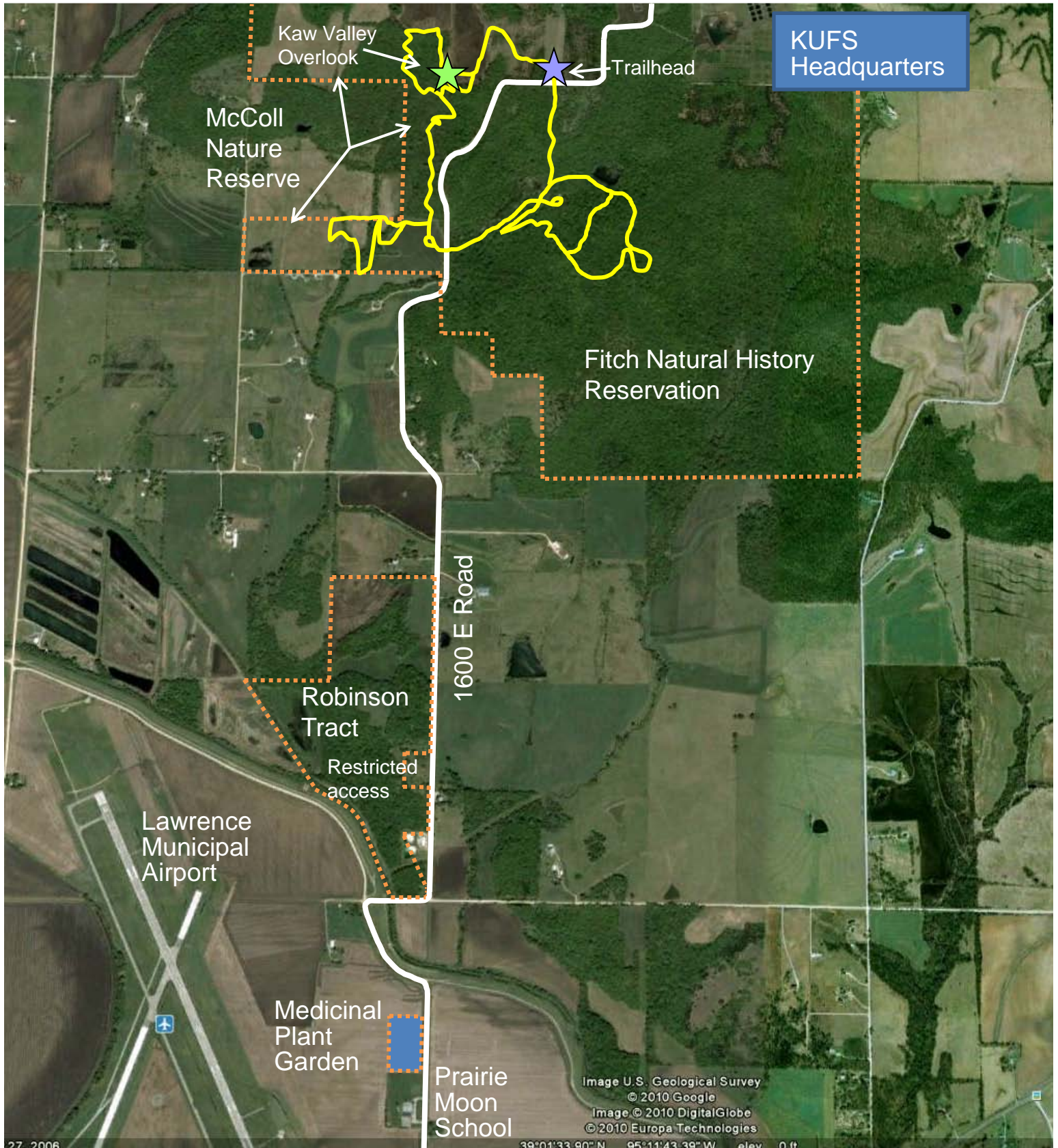


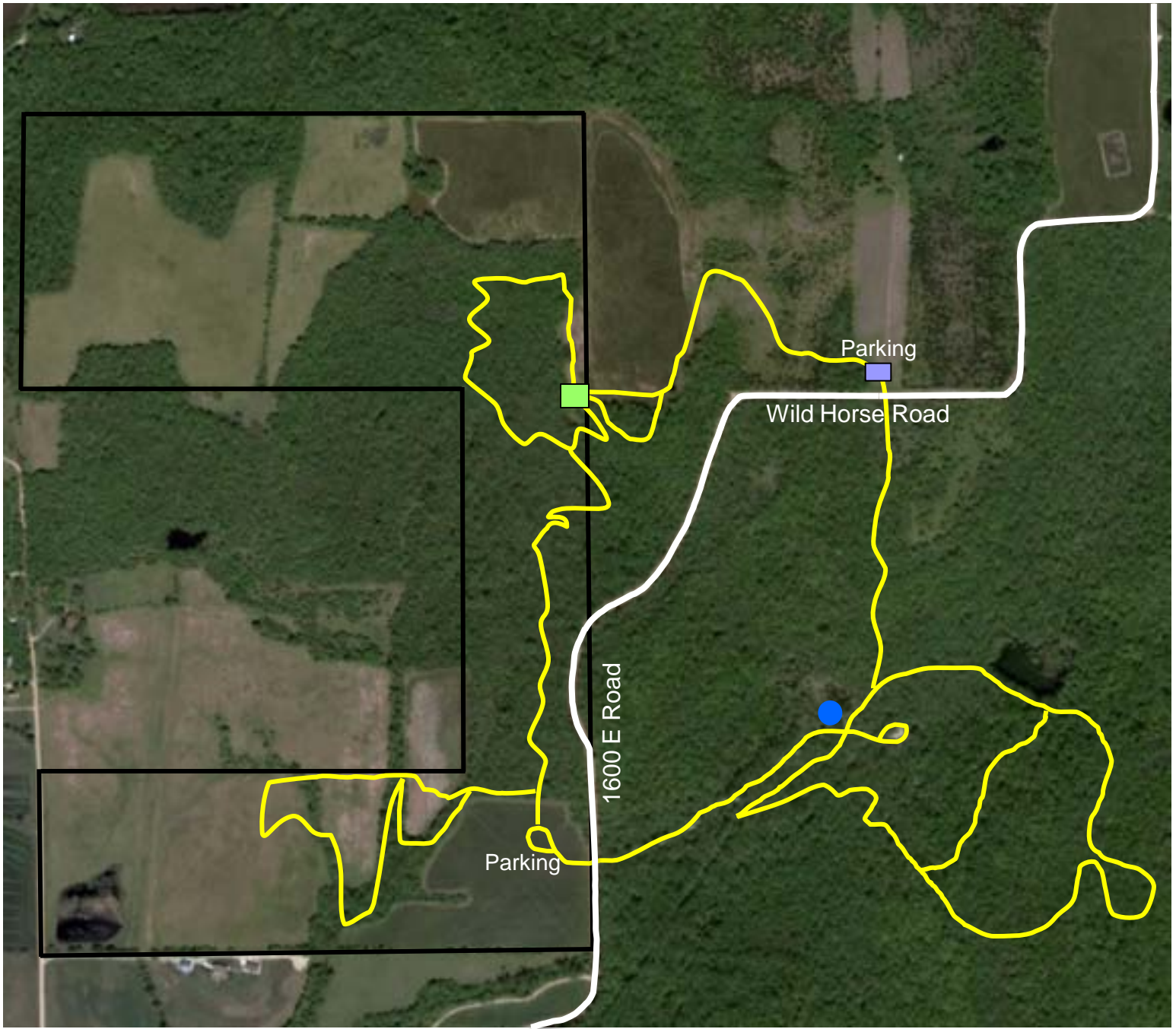
# University of Kansas Field Station



US 24/40  
Lawrence

----- KU Field Station boundaries

# KU Field Station Trails System



## Legend

-  Kaw Valley Overlook
-  Trailhead
-  Trails
-  Gravel Road
-  McCull Nature Reserve
-  Restroom/drinking fountain

## Welcome to the KU Field Station

- Trails are open down to dusk **ONLY**.
- Foot traffic **ONLY**.
- Stay on the marked trails.
- Dogs or other pets are not allowed (even if leashed).
- Do not release wild or domestic animals or plants.
- Do not disturb flags, markers, traps, or equipment.
- Smoking, fires of any kind, and fireworks are prohibited.
- Firearms and paint ball guns are prohibited.
- Alcoholic liquors and cereal malt beverages are prohibited.

Enjoy your visit, and thank you for protecting this natural environment and the research conducted here. For more information, contact Scott Campbell (swcamp@ku.edu, 785-864-1502) or visit [www.ksr.ku.edu](http://www.ksr.ku.edu).